



DLF_DLH1568 V3

15" TFT LCD, LED Backlight 2000nits,XGA(1024x768)

15" TFT LCD panel, built-in 2000 nits high bright for sunlight readable LCD display, high transmittance color filter, high transmission polarizing plates, Low Power Consumption, suitable for kiosk, advertising, POS, marine, transportation, gaming, studio display, gas pump.

Key Features

- Ultra Brightness: 2000nits
- LED Backlight
- XGA(1024x768) High Definition
- High Shock & Vibration Resistance
- Low Power Consumption
- High Uniformity
- Low EMI Noise
- Wide Dimming
- Wide Operation temperature
- Life Expectancy



Specifications

V1

Model No.	DLF1568 V3	DLH1568 V3
Description	15" TFT LCD, LED Backlight 2000nits,XGA(1024x768)	
Display Area (mm)	304.13(H) x 228.1(V) mm	
Brightness	2000 cd/m ²	
Resolution	1024x768 (XGA)	
Contrast Ratio	1000 : 1	
Pixel Pitch (mm)	0.297(H) x 0.297(V)	
Pixel Pre Inch (PPI)	85	
Viewing Angle	+80°~-80°(H), +80°~-80°(V)	
Color Saturation (NTSC)	69%	
Display Colors	16.7M	
Response Time (Typical)	8ms	
Operating Temperature	-20°C ~ 70°C	
Storage Temperature	-30°C ~ 80°C	
Power Consumption	20W	23W
Dimensions (mm)	326.5 x 253.5 x 21 (mm)	
Weight (Net)	1.0kg	1.1kg
LED Driving Board	LID15A	
Control Board (Optional)	<input type="checkbox"/> AD6038GA <input type="checkbox"/> AD6038GD	
	<input type="checkbox"/> AD6038GA	VGA+Audio
	<input type="checkbox"/> AD6038GD	VGA+DVI
Control Button	<input type="checkbox"/> 4 Key	
	<input type="checkbox"/> 4 Key	Power Switch, Menu, Select (+,-),
OSD Menu	Brightness, Contrast, H/V Position, Color, Phase, Clock...	
Optional	<input type="checkbox"/> AOT <input type="checkbox"/> Touch Screen	

Specifications are subject to change without notice.

All brands or product names are trademarks or registered trademarks of their respective companies.

DLF= Panel+LED Driving Board

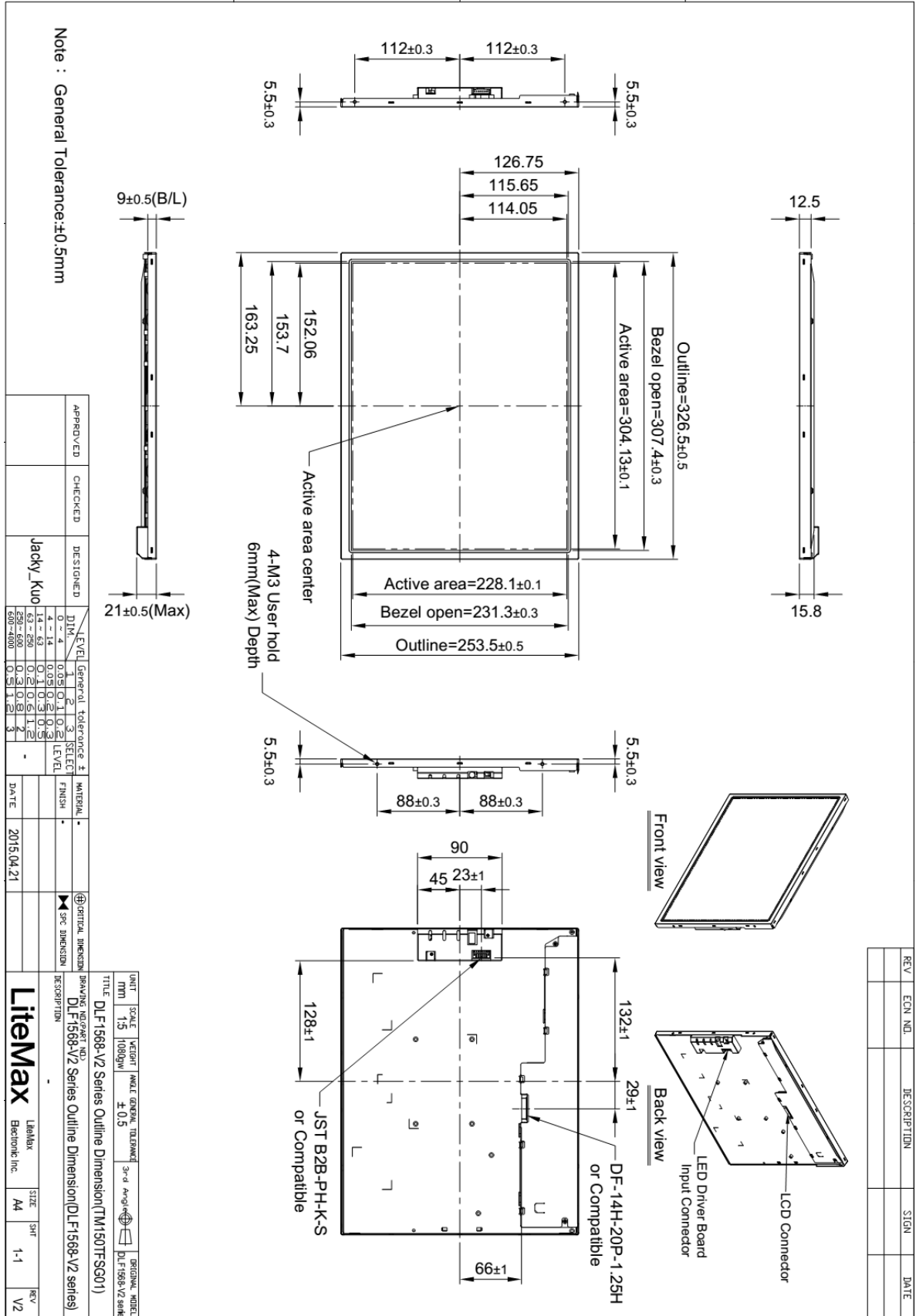
DLH= Panel+LED Driving Board+Control Board



Mechanical Drawing

Outline Dimensions

Unit:mm





Ordering Information

Part Number	Description
DLF1568-ENN-A61	15",2000nits,XGA,LID15A,1in1,V3
DLF1568-ENN-A62	15",2000nits,XGA,LID15A,5in1,V3
DLH1568-ENN-I61	15",2000nits,XGA,LID15A,AD6038GA,DC12V,1in1,V3
DLH1568-ENN-I62	15",2000nits,XGA,LID15A,AD6038GA,DC12V,5in1,V3
DLH1568-ENN-I63	15",2000nits,XGA,LID15A,AD6038GD,DC12V,1in1,V3
DLH1568-ENN-I64	15",2000nits,XGA,LID15A,AD6038GD,DC12V,5in1,V3

Optional Accessories

Part Number	Description
840612031101	ADAPTER.12V.3.33A.40W.G99-KPL040F-N051.DC Plug 2.1*5.5,P
810618301010	CABLE.POWER.AC.1830mm USA type
810618301090	CABLE.POWER.AC,1830mm Europe type
810618301050	CABLE.POWER.AC.1830mm UK type
810618301170	CABLE.POWER.AC,1830mm Australia type
810618301031	CABLE.POWER.AC.1830mm Japan type